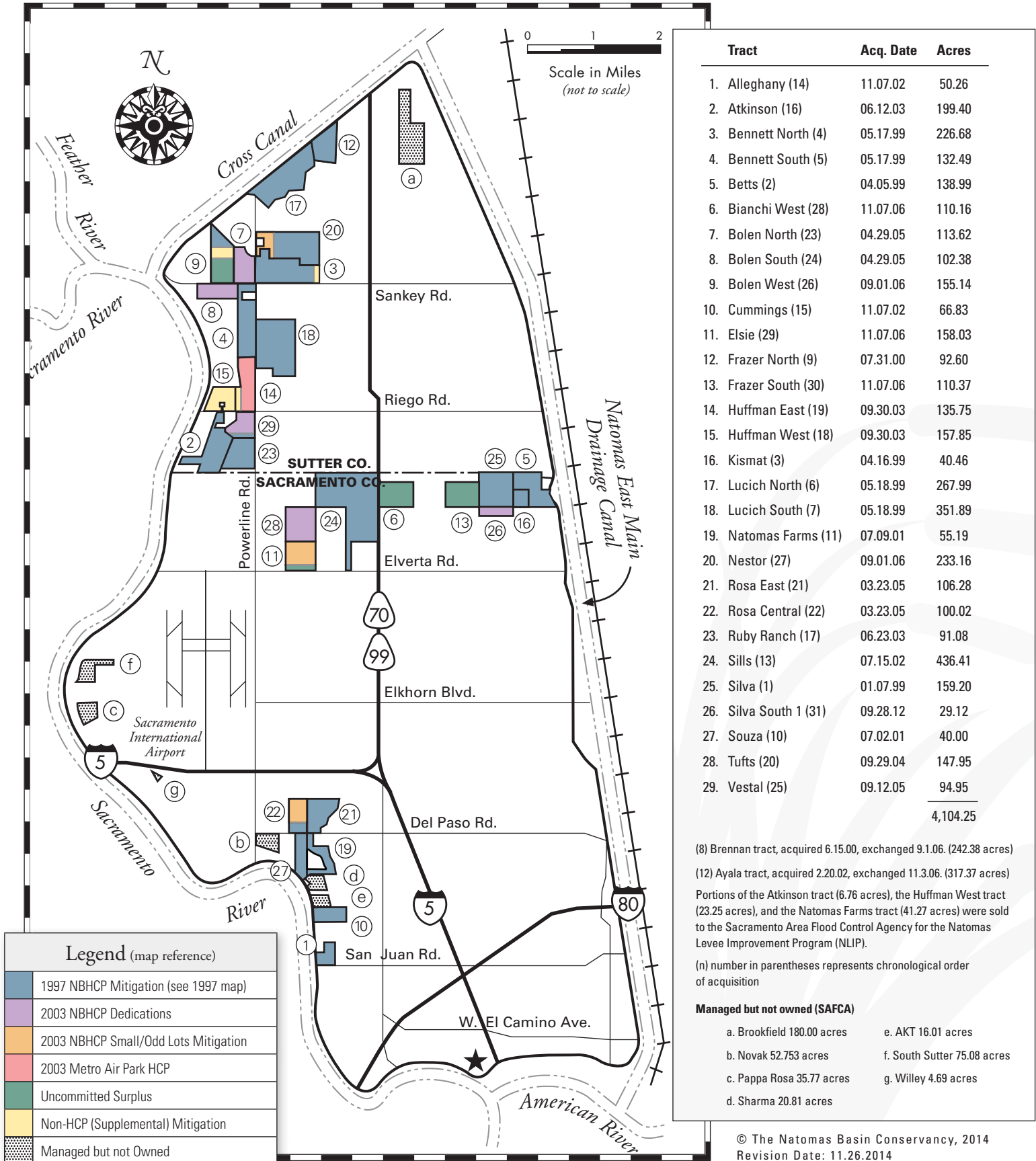


LAND ALLOCATION WORKSHEET

2003 NBHCP Mitigation Land Allocation (From Mid-2003)

1

THE NATOMAS BASIN CONSERVANCY



2003 NBHCP & MAPHCP Mitigation Land Allocation (From Mid-2003)

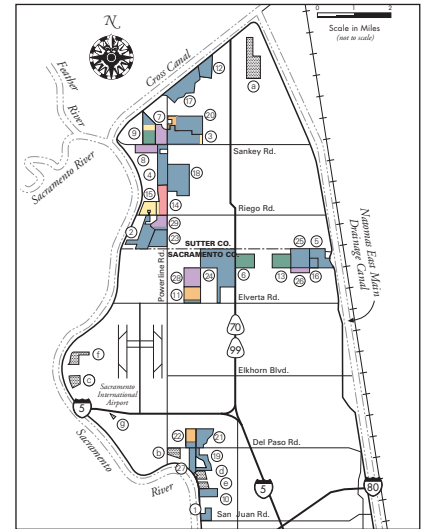
2

THE NATOMAS BASIN CONSERVANCY

		Acres
Current Land Holdings (section 3 below)		4,131.12
Mitigation land requirement for 2003 NBHCP & MAPHCP (@ .5:1 ratio)		(3,562.51)
Mitigation fees paid ¹	7,325.02	
Less: Metro Air Park (MAP) non-HCP mitigation	(200.00)	
<i>Subtotal</i>	7,125.02	
Total Mitigation Land Requirement @ .5:1 ratio		3,562.51
Land held less HCP-required mitigation		568.61
Less: Adjustments		(288.46)
Less: 200-acre May 1 required reserve	200.00	
Less: Brookfield (Tufts tract, reserved, unused) mitigation credit	32.13	
Less: Ose Prop. (56.94 acres prepaid, not permitted)	28.47	
Less: Opus West (Tufts tract, reserved, unused) mitigation credit	10.72	
Less: Sacramento County Lower Northwest Interceptor ²	9.11	
Less: RD 1000 Plant #3	5.76	
Less: AT&T, PG&E, SMUD, misc.	2.30	
<i>Total Adjustments</i>	288.46	
Total uncommitted surplus acres		280.14

Details

Details



Legend (map reference)	
	1997 NBHCP Mitigation (see 1997 map)
	2003 NBHCP Dedications
	2003 NBHCP Small/Odd Lots Mitigation
	2003 Metro Air Park HCP
	Uncommitted Surplus
	Non-HCP (Supplemental) Mitigation
	Managed but not Owned

Detail of Land and Easements Owned by TNBC

3

THE NATOMAS BASIN CONSERVANCY

1997 NBHCP & MAPHCP Mitigation Attribution

1997 NBHCP Land Allocations

Ruby Ranch	91.08	Kern Schumacher & Lewis Development
Atkinson ³	199.21	Kern Schumacher
Alleghany, Cummings, Sills (part)	256.90	Alleghany Properties, Inc.
Natomas Farms ³ & Souza	99.97	Lennar Communities
Betts, Kismat, Silva, Lucich North, Lucich South, Bennett North, Bennett South, Brennan (part), Frazer, Sills (part)	2,038.48	Various Fee Payers (VFP)
Ayala, Brennan (part)	367.30	Surplus; not assigned for HCP mitigation
3,052.93		Total Acres Owned by TNBC ⁴

¹ This figure is from the Schedule of Fee Paid Acres spreadsheet not included in this illustration.

² Lower Northwest Interceptor (LNWI) - fees were paid on 9.11 acres while 7.68 acres were dedicated. Mitigation for LNWI was reallocated to Bennett North.

³ SAFCA purchased portions of Atkinson (6.76 acres), Huffman West (23.25 acres) and Natomas Farms (41.27 acres) for their Natomas Levee Improvement Project. Mitigation on those portions was shifted to Bolen West. Original acreages are as follows: Atkinson 205.97 acres, Huffman West 181.00 and Natomas Farms 96.56 acres.

⁴ Date of conversion from 1997 NBHCP to 2003 NBHCP is 7.10.03.

Property Trade/Exchange Adjustments *(italics represent land leaving Conservancy ownership)*

Gain on Land Exchanges

	Property Acres	Break-down on Property Acres	
A. Sills (part)	<i>(139.15)</i>	<i>(139.15)</i>	<i>1997 NBHCP Various Fee Payers (VFPs)</i>
Rosa East	106.28	106.28	1997 NBHCP VFPs
Rosa Central	100.02	33.22	1997 NBHCP VFPs
		61.04	Pardee Homes, Natomas Place @ Del Paso Rd. & Gateway Park Blvd.
		5.76	2003 NBHCP small/odd lot mitigation
Exchange Difference	67.15		
B. Brennan	<i>(242.38)</i>	<i>(192.44)</i>	<i>1997 NBHCP VFPs</i>
		(49.97)	1997 NBHCP surplus
Nestor	233.16	192.44	1997 NBHCP VFPs
		40.72	2003 NBHCP small/odd lot mitigation
Bolen West ³	155.14	23.25	Metro Air Park, non-HCP mitigation (HUFW)
		4.23	Supplemental, non-HCP mitigation
		6.76	Kern Schumacher (ATK)
		41.27	Lennar Communities (NAF)
		21.47	2003 NBHCP small/odd lot mitigation
		58.16	2003 NBHCP surplus
Exchange Difference	145.93		
C. Ayala	<i>(317.37)</i>	<i>(317.37)</i>	<i>1997 NBHCP surplus</i>
Bianchi West	110.16	110.16	2003 NBHCP surplus
Elsie	158.03	50.16	Grant Joint Union High School District E. Natomas Ed. Cmplx @ E. Levee Rd. & Del Paso Rd.
		25.00	2003 NBHCP (SYSCO, NBHCP, Ch. I-7)
		58.47	2003 NBHCP small/odd lot mitigation
		21.00	Supplemental, non-HCP mitigation
		3.40	2003 NBHCP surplus
Frazer South	110.37	110.37	2003 NBHCP surplus
Exchange Difference	61.20		
	274.27	Total Acreage Gain on Trades/Exchanges	

2003 NBHCP & MAPHCP Land Dedications *(NBHCP p. VI-10)*

2003 NBHCP & MAPHCP Land Dedications

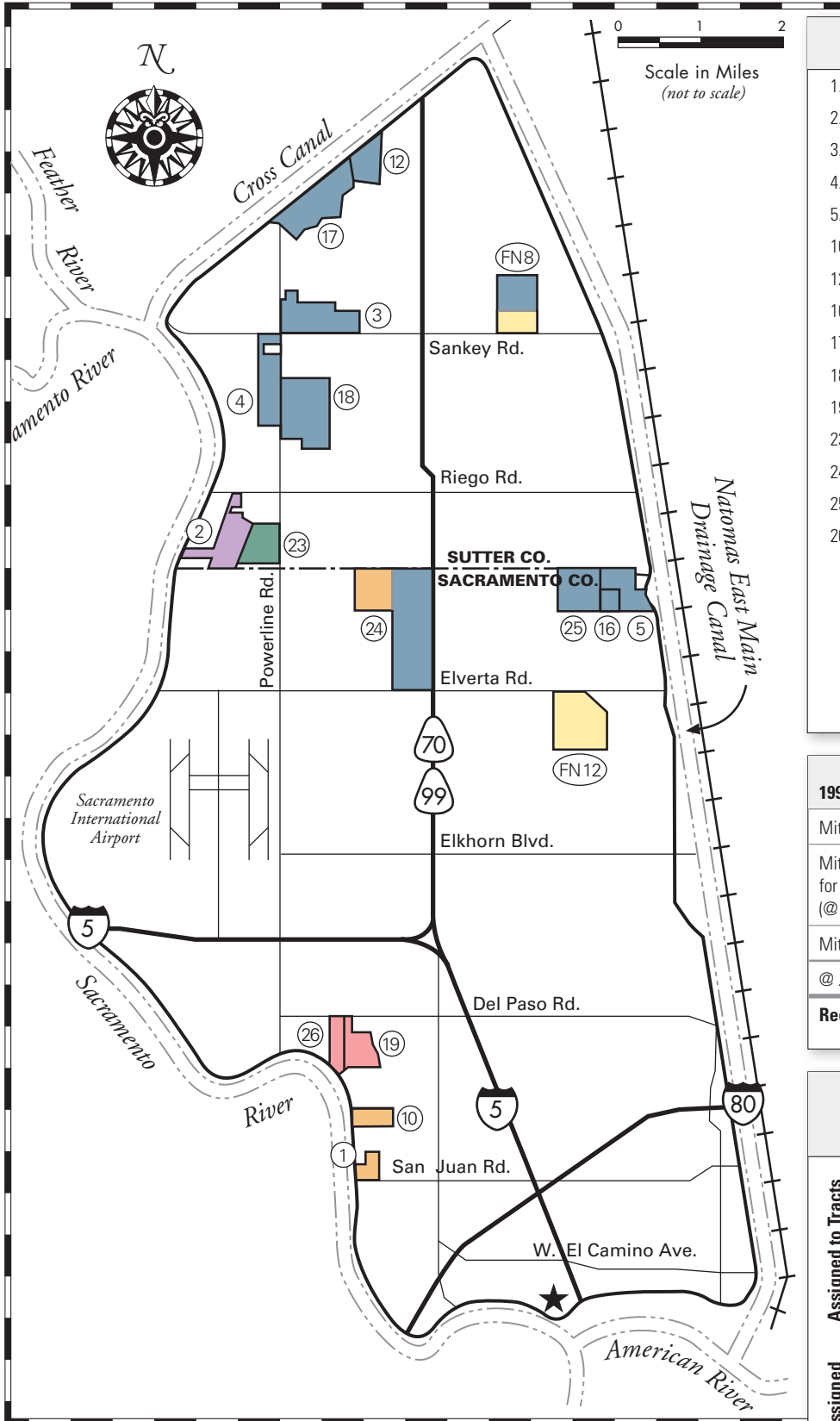
	Property Acres	Break-down on Property Acres	
Huffman West ³	157.76	157.75	Metro Air Park, non-HCP mitigation
		0.00	Metro Air Park mitigation
Huffman East	135.75	19.00	Metro Air Park, non-HCP mitigation
		116.75	Metro Air Park mitigation
Tufts	147.95	63.12	Opus West, Promenade @ Truxel & I-80
		42.01	Griffin Industries, Park Bridge @ Truxel & I-80
		32.11	Brookfield (reserved, unused)
		10.72	Opus West (reserved, unused)
Bolen North & South	216.00	216.00	Forecast Homes, Natomas Central Development @ El Centro & Del Paso Blvd.
Vestal	94.95	87.27	Beazer Homes, River Oaks/Natomas Field @ West El Camino, Arena & Commerce
		7.68	Lower Northwest Interceptor (LNWI), Sacramento County, non-HCP mitigation ²
Silva South (1)		29.12	Sutter County-SR99 & Riego Rd. Interchange
	781.52	Total TNBC land dedication from mid-2003	
Less: Souza tract settlement	(4.68)		
Easements	27.08		
	4,131.12	Total Acres Owned by TNBC	

LAND ALLOCATION WORKSHEET

1997 NBHCP Mitigation Land Allocation (To Mid-2003)

4

THE NATOMAS BASIN CONSERVANCY



Tract	Acq. Date	Acres
1. Alleghany (14)	11.07.02	50.26
2. Atkinson (16)	06.12.03	205.40
3. Bennett North (4)	05.17.99	226.68
4. Bennett South (5)	05.17.99	132.49
5. Betts (2)	04.05.99	138.99
10. Cummings (15)	11.07.02	66.83
12. Frazer North (9)	07.31.00	92.60
16. Kismat (3)	04.16.99	40.29
17. Lucich North (6)	05.18.99	267.99
18. Lucich South (7)	05.18.99	351.89
19. Natomas Farms (11)	07.09.01	96.46
23. Ruby Ranch (17)	06.23.03	91.08
24. Sills (13)	07.15.02	575.56
25. Silva (1)	01.07.99	159.20
26. Souza (10)	07.02.01	44.68

(n) Number in parentheses represents chronological order of acquisition; # represents Conservancy tract number identifier.

FN (8) The Brennan tract was acquired 6.15.00 and subsequently exchanged on 9.1.06 (242.38 ac.)

FN (12) The Ayala tract was acquired on 2.20.02 and subsequently exchanged on 11.07.06 (317.37 ac.)

1997 NBHCP Mitigation Land Allocation		Acres
Mitigation land held at 7.10.03		3,100.13
Mitigation land requirement for 1997 NBHCP & MAPHCP (@ .5:1 ratio)		(2,732.82)
Mitigation thru 7.10.03 ¹	5,465.65	
@ .5:1 ratio	2,732.82	
Reconciliation at 7.10.03		367.30

Legend (map reference)		
	Mitigation Attribution	Acres
Assigned to Tracts	Kern Schumacher & Lewis Development	91.08
	Kern Schumacher	205.40
	Alleghany	256.90
	Lennar	141.14
Not Assigned	Various Fee Payers (VFP) ¹	2,038.31
	Surplus; not assigned for mitigation	367.30
	Total	3,100.13²

¹ Not assigned to a specific tract, but assigned as mitigation on land designated as mitigation land.

² Later adjusted less 4.68 acres because of Souza tract settlement.