



**EXECUTIVE DIRECTOR'S  
REPORT**

AUGUST 8, 2018

BOARD OF DIRECTORS MEETING

**THE NATOMAS BASIN CONSERVANCY**

2150 River Plaza Drive, Suite 460, Sacramento, CA 95833

---

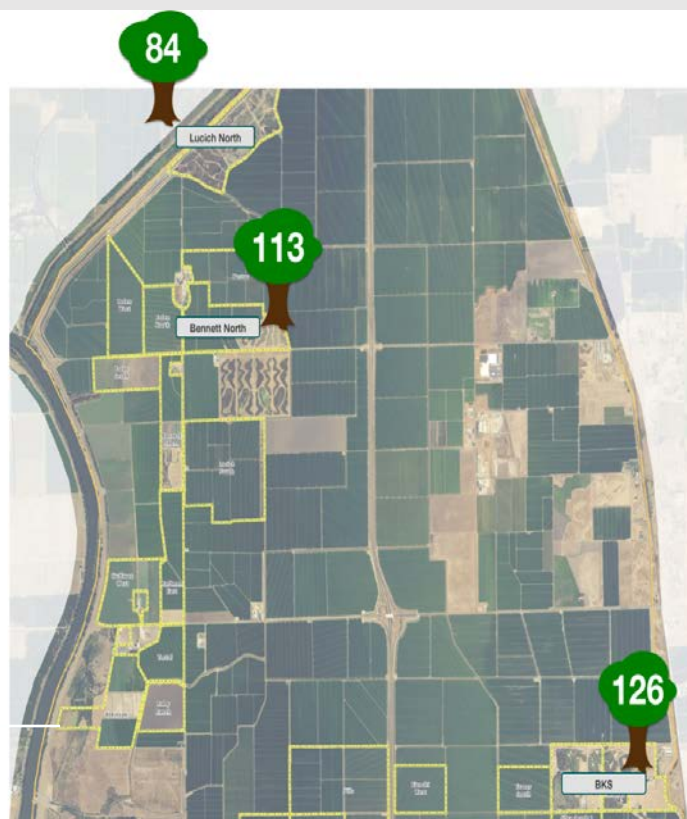
This is general and informal information for review purposes only.

## Section 1 PG&E Mitigation trees

PG&E performed vegetation management along the alignment of the Line 407 Natural Gas Transmission Pipeline Project (Project), in 2016 and 2017. The vegetation management involved the removal of 52 trees. As a result of this work and to comply with the associated California Environmental Quality Act (CEQA) Environmental Impact Report (EIR) mitigation measures, as well as conditions within the Project's California Department of Fish and Wildlife (CDFW) Lake and Streambed Alteration Agreement (SAA), mitigation for removed trees is required. The tree mitigation proposed would take place within three Natomas Basin Conservancy (TNBC) land tracts: Lucich North, Bennett North, and Betts-Kismat-Silva (BKS).



## Tree Allocation



# Tree Type

