

A photograph of a hawk perched on a nest made of twigs and mud, situated in a field of tall, green grass. The hawk is facing right, and its feathers are a mix of brown and white with dark streaks. The background is a dense field of tall grass, slightly out of focus.

EXECUTIVE DIRECTOR'S REPORT

February 1, 2023
BOARD OF
DIRECTORS MEETING

STATUS OF CEO'S PERCEPTION OF TOP 10 RISKS TO CONSERVANCY OPERATIONS

EVER-CHANGING ERM RISK CHART

WINTER
2023

*Natomas
Conservancy*

Date:
February 2023

Characterization

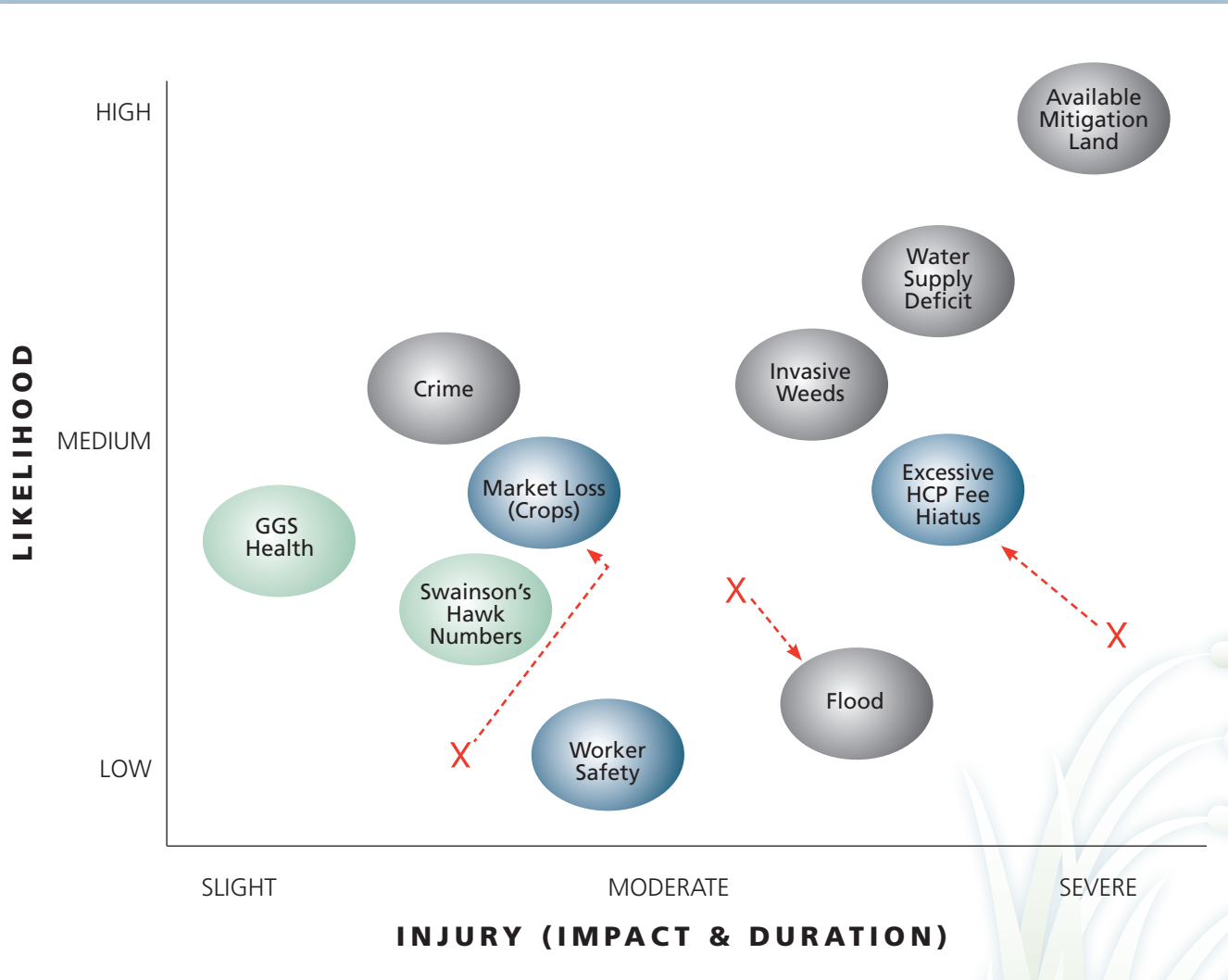
Issue is mostly:

■ Economic

■ Biological

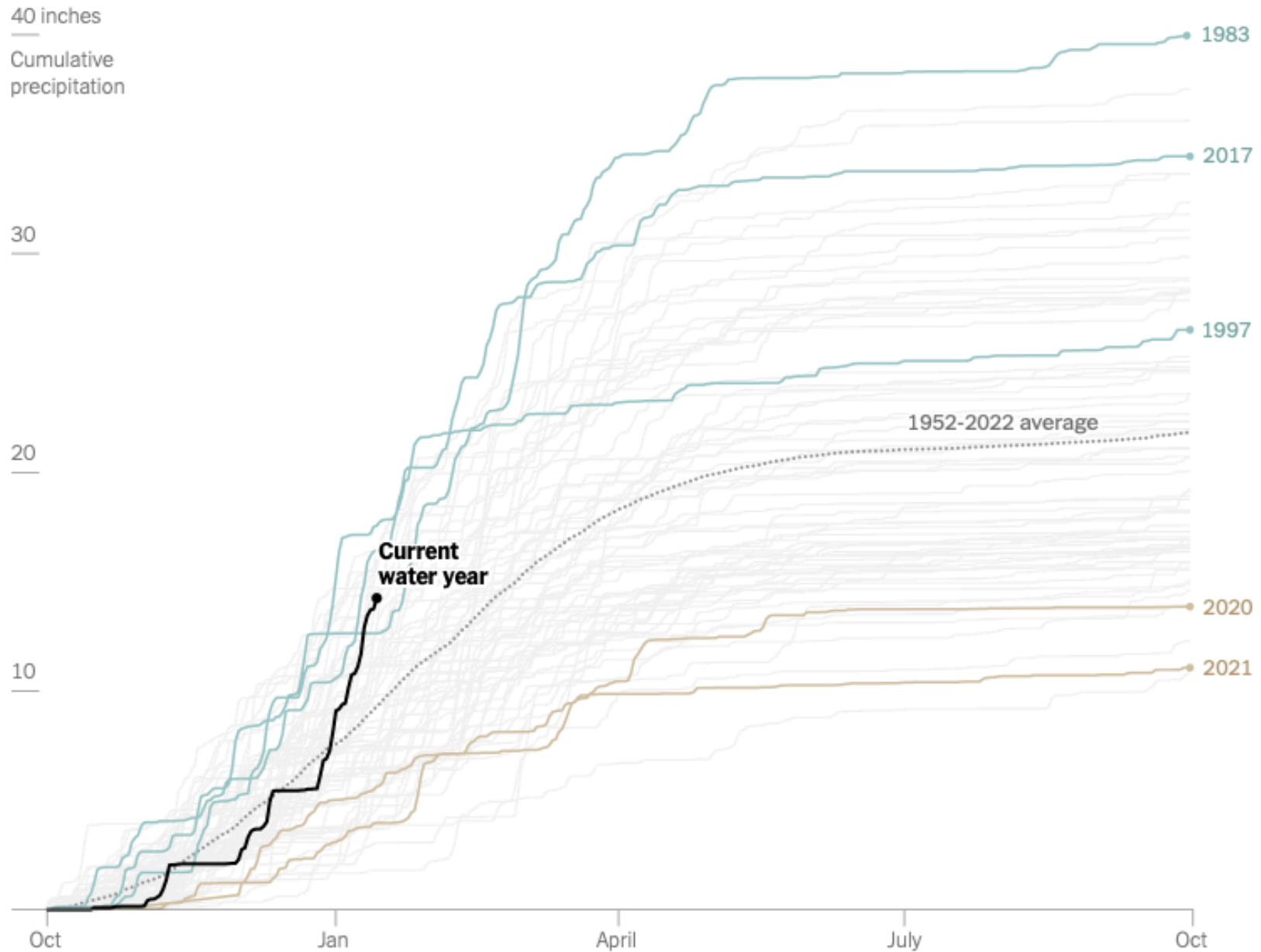
■ Both

X Former Position

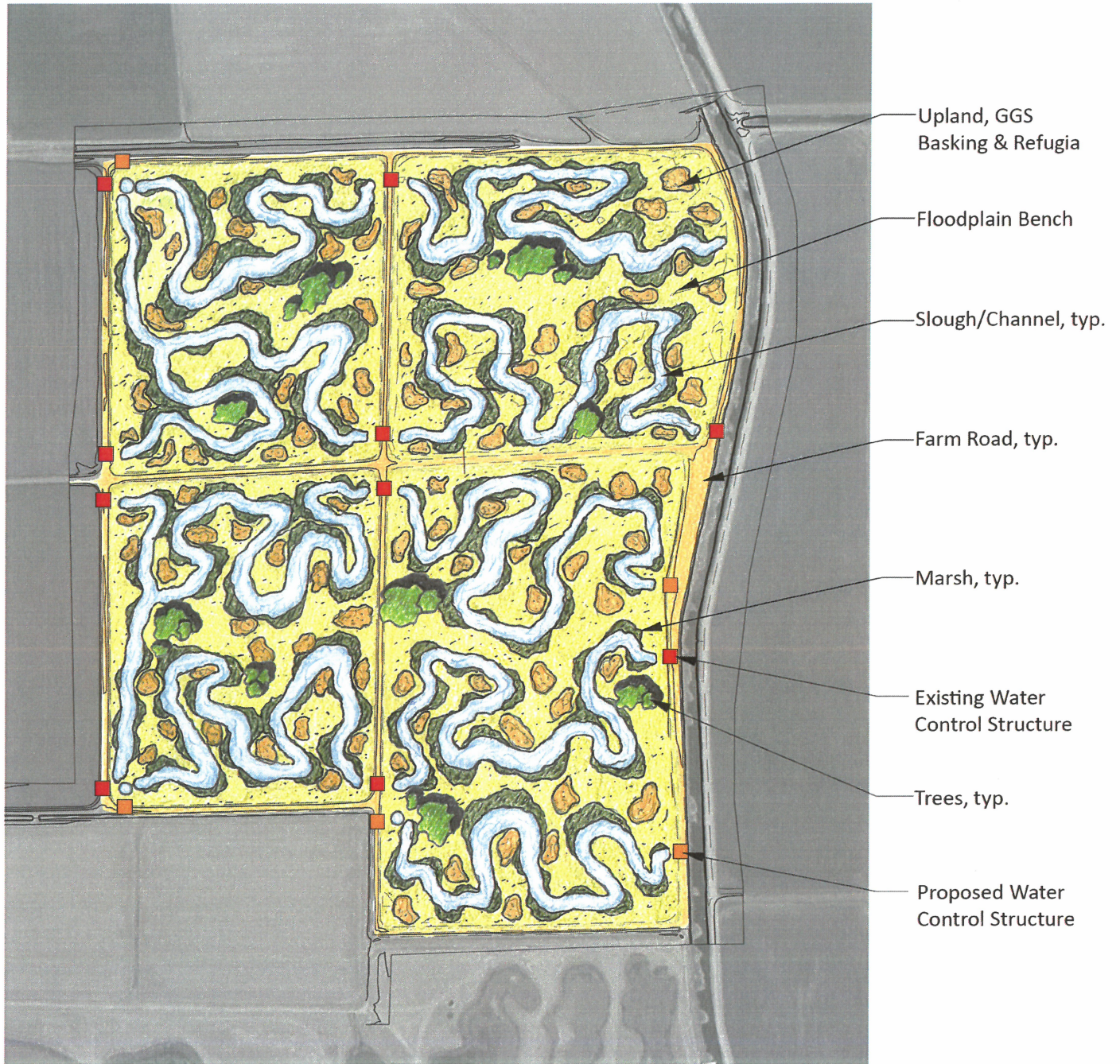


California's Storms in Context

Cumulative rainfall across the state is above average so far this winter, but other years have been even wetter.



Note: The California water year starts in October, aligning with the typical beginning of the rainy season. Current water year data as of Jan. 14, 2023. • Source: NOAA NClmGrid • By Mira Rojanasakul





 NOT TO SCALE