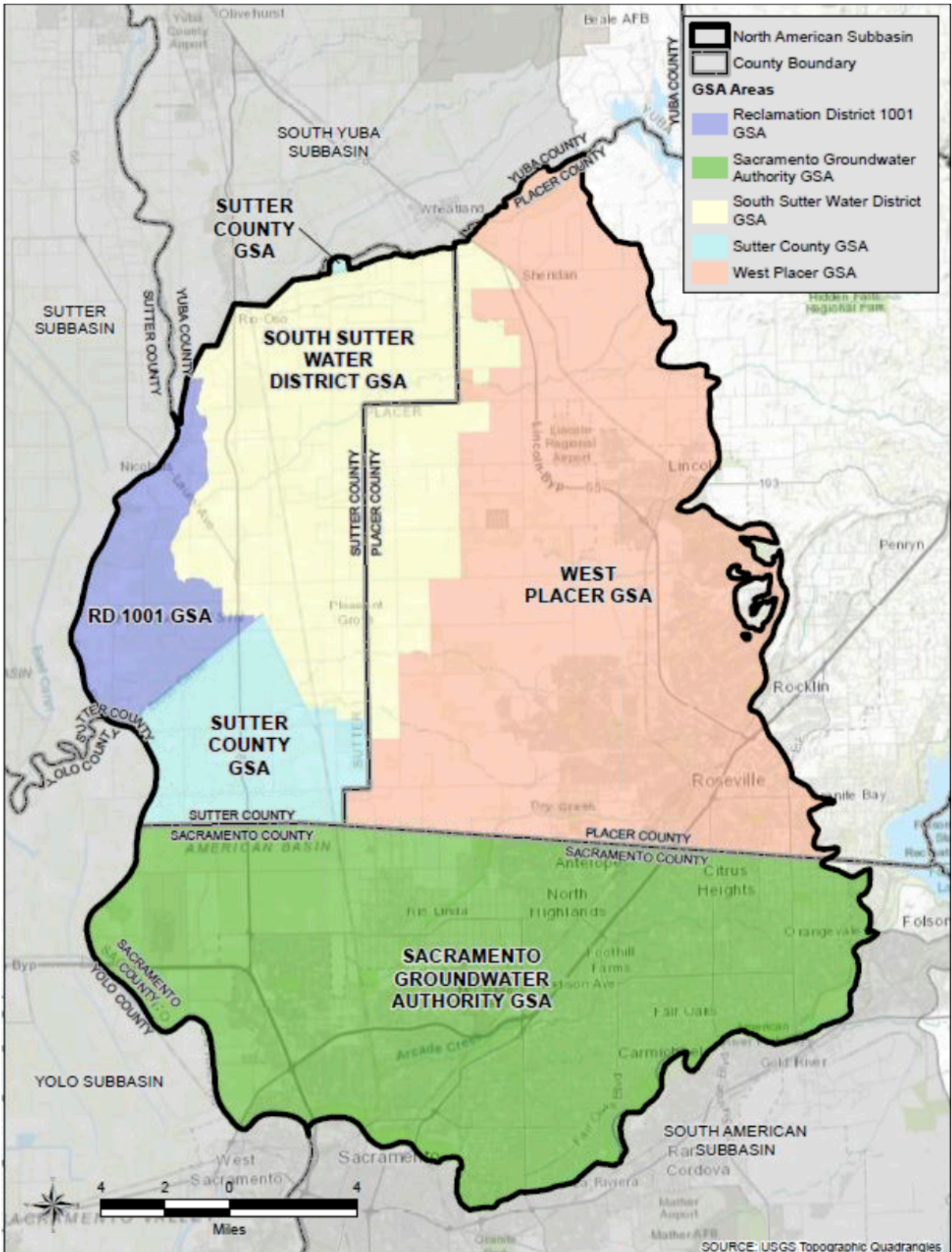




EXECUTIVE DIRECTOR'S REPORT

FEBRUARY 3, 2021
BOARD OF DIRECTORS MEETING



Legend

- North American Subbasin
- County Boundary
- GSA Areas**
- Reclamation District 1001 GSA
- Sacramento Groundwater Authority GSA
- South Sutter Water District GSA
- Sutter County GSA
- West Placer GSA

GSA and GSP Development
Placer County, California

Placer County

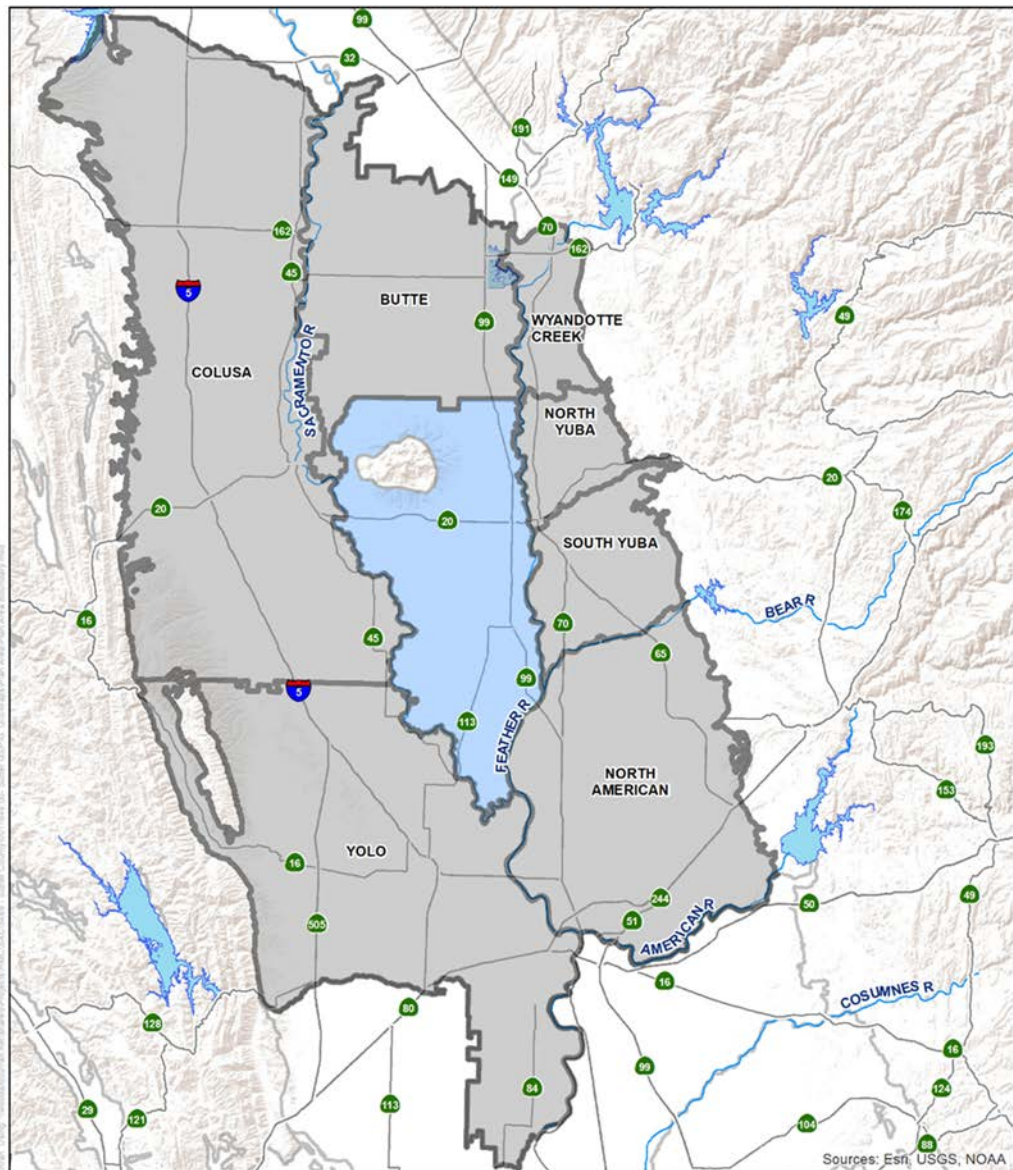


North American Subbasin
Groundwater Sustainability Agencies

SEPTEMBER 2018

DRAFT

FIGURE 1









Sutter Subbasin GSP

Plan Area Boundary

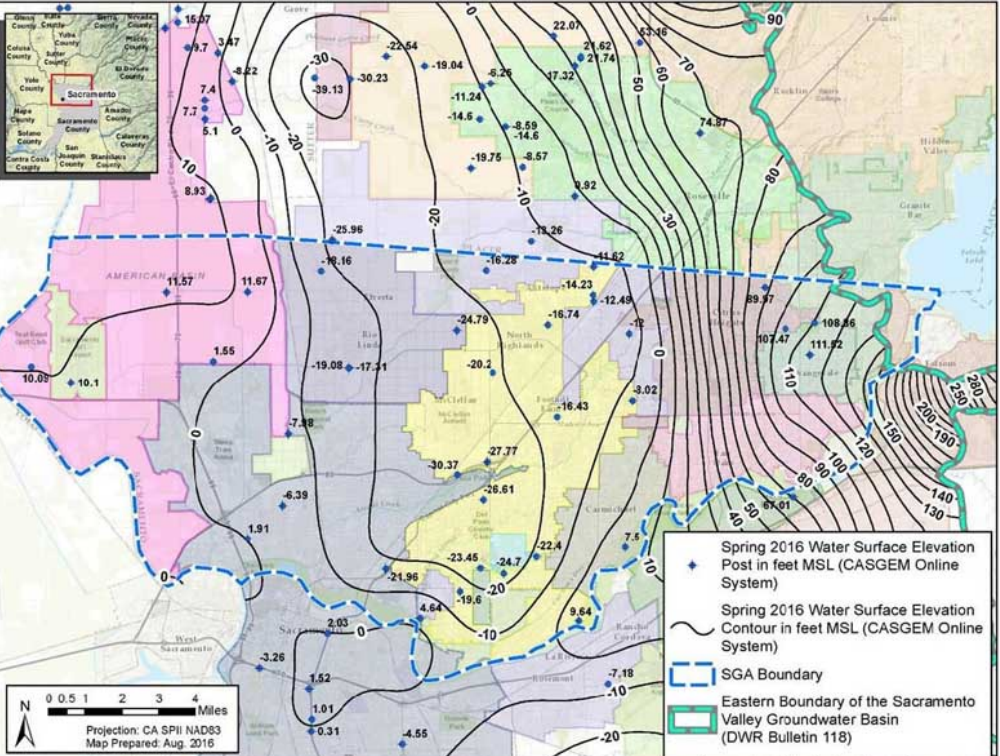
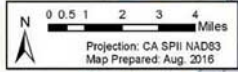
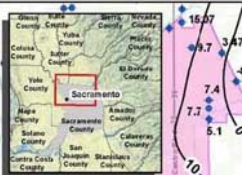
Plan Area

Legend

- | | |
|-----------------------------------------------------------------------------------------------------------------------------|-------------------------------------------------------------------------------------------------------------|
|  Sutter Subbasin Boundary |  Major Lake or Reservoir |
|  Neighboring Subbasins |  Highway |
|  Other Bulletin 118 Basins and Subbasins |  Major River |

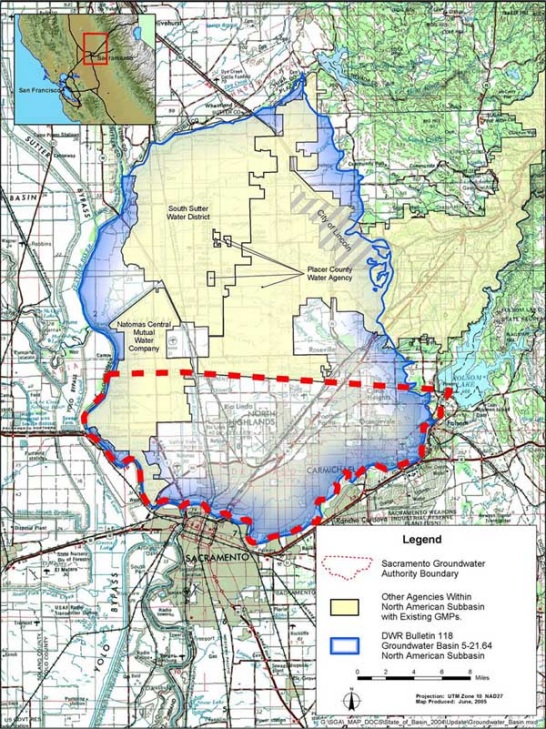


Project #: 0011649.00
Map Created: October 2020



- ◆ Spring 2016 Water Surface Elevation Post in feet MSL (CASGEM Online System)
- Spring 2016 Water Surface Elevation Contour in feet MSL (CASGEM Online System)
- - - SGA Boundary
- - - Eastern Boundary of the Sacramento Valley Groundwater Basin (DWR Bulletin 118)

Document Path: F:\projects\028_318806_SGA_CWA_Elevation_Contour_Map\map_docs\msl\SP16_SpringContourMap_2016.mxd




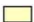

South Sutter Water District

Placer County Water Agency

Natomas Central Mutual Water Company

SACRAMENTO

Legend

-  Sacramento Groundwater Authority Boundary
-  Other Agencies Within North American Subbasin with Existing GMPs.
-  DWR Bulletin 118 Groundwater Basin 5-21.64 North American Subbasin

0 2 4 6 8 Miles



Projection: UTM Zone 12 NAD83
Map Produced: June, 2005